



PIPETECH INDUSTRIES LTD

National & International Suppliers of Pipeline Products & Equipments

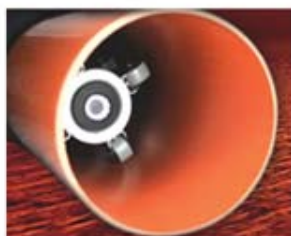
Tel:+44 (0) 1709 362 720

0800 783 68 64

MINI COLOUR CAMERA

Mini 3000-S Color Base Equipment

Camera 3000-S has in color very well suitably ours Plumbers, Cleaning pipe companies, Industry, Municipal area, Canal construction



Use:

Channel and drain lines, Sewage tanks, Ventilation shafts, Civil engineering, Electric installation shafts, Chimneys, Cavities, Fountain and many use areas more....



• **15 x Ultra-Powerlight LED's** for optimal image quality

Art.No: Product name:

R.3000-11 **Aluminium eeg**

of 75 mms pipes



R.3000-13 **Aluminium eeg**

of 100 mms pieps



Roller Skids

R.3011 of 130 mms pipes

R.3012 of 200 mms pipes



LCD-Monitor 5,6" high-resolution with aluminum case and protection blank faceplate



Technical data:

- Usable as of 30 mm to max. 150 mm (depending on equipment)
- For bends NW 50 - 90 Grad bends
- Schiebeaal 4,5 mm Ø x 30 meter long with integrated camera cable
- Robust trouble-free contacts to windlass
- **Camera head made of high-grade steel waterproof till max. 4 bar**
- High-resolution camera chip of CCD 1/4 " -- 420 TV lines, the guaranteed best image quality
- Camera module light sensitiveness of 0.05 Lux
- Objective far angle 87°
- Power supply: 230 volts of 50 Hz or 12 volts
- **Weight: approx. 5.6 kg**
- **measures: H 51 x B 37 x t of 19 cm**



PIPETECH INDUSTRIES LTD

National & International Suppliers of Pipeline Products & Equipments

Tel:+44 (0) 1709 362 720

Pipetech Industries LTD (European Office)
Unit 12, Aspen Court, Aspen Way
Rotherham S60 1LR
E-mail: sales@pipetechindustries.com



TFT + DVR

1000-TFT-DVR

With the TFT monitor and the digital video Recorder you can depending on dissolving on a CompactFlash card Recording 2 GB approx. 2 - 8.3 hour. At present Compact-Flash cards are possibly optional to 16 GB

The two equipment is put in a robust aluminum case and a universal fastening system at the camerae can be installing. By the remote control contained in the scope of supply



Including a 2GB compactFlash Card with a Remote Control Unit

Technical Data - TFT:

- **Power:** 100 V – 240 V / 50 HZ Entrance 5VDC / 1,5A Exit
- **Television Standard:** Pal / NTSC
- **Dissolving:** 960 x 234
- **Broughtness:** 350 cd/m²
- **Contrast:** 350:1
- **Viewpoint:** H 50° / V 35°
- **Diagonal:** 15 cm

Technical Data - DVR:

- **Power :** 100 V – 240 V/50 HZ Entrance 5VDC / 1,5A Exit
- **Television Standard:** Pal / NTSC
- **Video Formats:** ASF, AVI, Mp4
- **Video Decoder:** MPEG-4 SP, MPEG-1 Layer 3 (Mp3) 30 fps bei D1 Dissolving DivX 3.11 @ CIF, 4,x, 5,x, 30fps bei D1 Dissolving Quick Time 6, MPG-4 AAC-LC stereo, Mp4 Format bei D1 Dissolving.
- **Video Encoder:** 320 x 240 (OVGA); 30 fps or 15 fps; MPEG4 +AAC-LC 640 x 480 (TV VGA); MPEG4+AAC-LC; 30 fps
- **Picture Format:** JPEG, BMP; GIF
- **Loft Card:** Compact-Flash Karte 2GB (oder höher optional)

